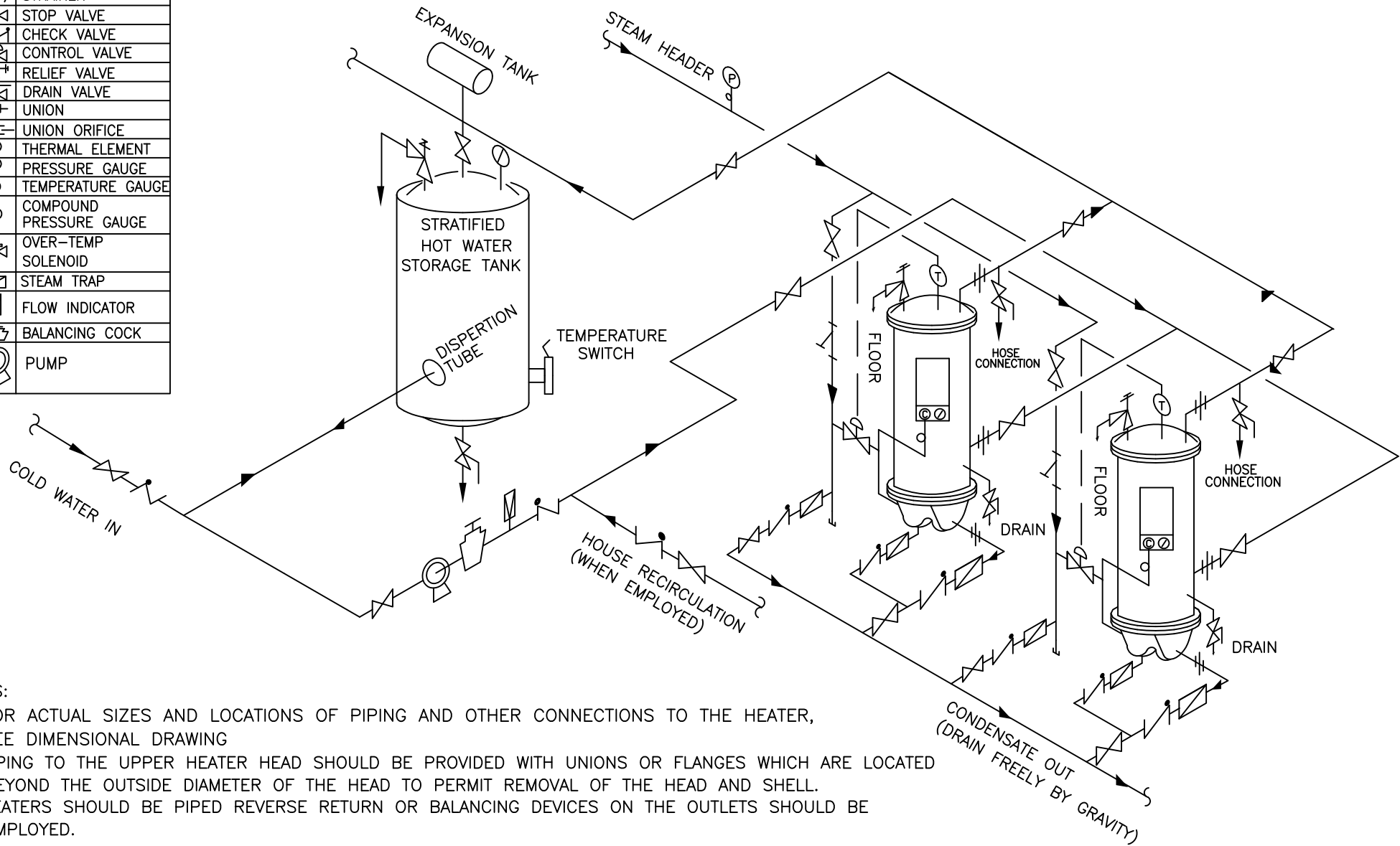


LEGEND

	STRAINER
	STOP VALVE
	CHECK VALVE
	CONTROL VALVE
	RELIEF VALVE
	DRAIN VALVE
	UNION
	UNION ORIFICE
	THERMAL ELEMENT
	PRESSURE GAUGE
	TEMPERATURE GAUGE
	COMPOUND PRESSURE GAUGE
	OVER-TEMP SOLENOID
	STEAM TRAP
	FLOW INDICATOR
	BALANCING COCK
	PUMP



NOTES:

- 1) FOR ACTUAL SIZES AND LOCATIONS OF PIPING AND OTHER CONNECTIONS TO THE HEATER, SEE DIMENSIONAL DRAWING
- 2) PIPING TO THE UPPER HEATER HEAD SHOULD BE PROVIDED WITH UNIONS OR FLANGES WHICH ARE LOCATED BEYOND THE OUTSIDE DIAMETER OF THE HEAD TO PERMIT REMOVAL OF THE HEAD AND SHELL.
- 3) HEATERS SHOULD BE PIPED REVERSE RETURN OR BALANCING DEVICES ON THE OUTLETS SHOULD BE EMPLOYED.
- 4) REDUCERS, ON THE WATER INLET SIDE, SHOULD BE LOCATED ADJACENT TO THE HEATER. EXPANSION FITTINGS, ON THE WATER INLET SIDE, SHOULD BE LOCATED AS FAR AS POSSIBLE FROM THE HEATER.
- 5) CONDENSATE DISCHARGE PIPING FROM HEATER AND STEAM TRAPS MUST BE ARRANGED TO PERMIT THE CONDENSATE TO DRAIN FREELY BY GRAVITY/DOWNHILL TO ATMOSPHERE OR VENTED RECEIVER. DO NOT DRAIN TO CONDENSATE RETURN SYSTEM OR ANY SYSTEM THAT WILL CAUSE LIFT/BACKPRESSURE.
- 6) DRAIN VALVE SHOULD BE PIPED DIRECTLY TO A FLOOR DRAIN. RELIEF VALVE & OVER-TEMP SOLENOID VALVE SHOULD BE PIPED VERTICALLY TO A HEIGHT 19" ABOVE THE FLOOR.
- 7) PUMP SHOULD BE CAPABLE OF HEATERS' TOTAL RATED FLOW AT DESIGN TEMPERATURE RISE.
- 8) MOUNT TEMPERATURE SWITCH 1/3 UP FROM THE BOTTOM OF THE TANK, SWITCH WILL TURN PUMP ON AND OFF.

AERCO INTERNATIONAL, INC. NORTHVALE, NJ 07647		
STRATIFIED STORAGE TANK WITH SWDW-1 OR SWDW-2 STEAM TO WATER DOUBLE WALL - MULTIPLE HEATERS		
DWN. BY <u>DMM</u> DATE <u>08/21/01</u>	SD-A-501	REV. <u>H</u>
SCALE <u>NTS</u>		
APPD. _____ DATE _____		