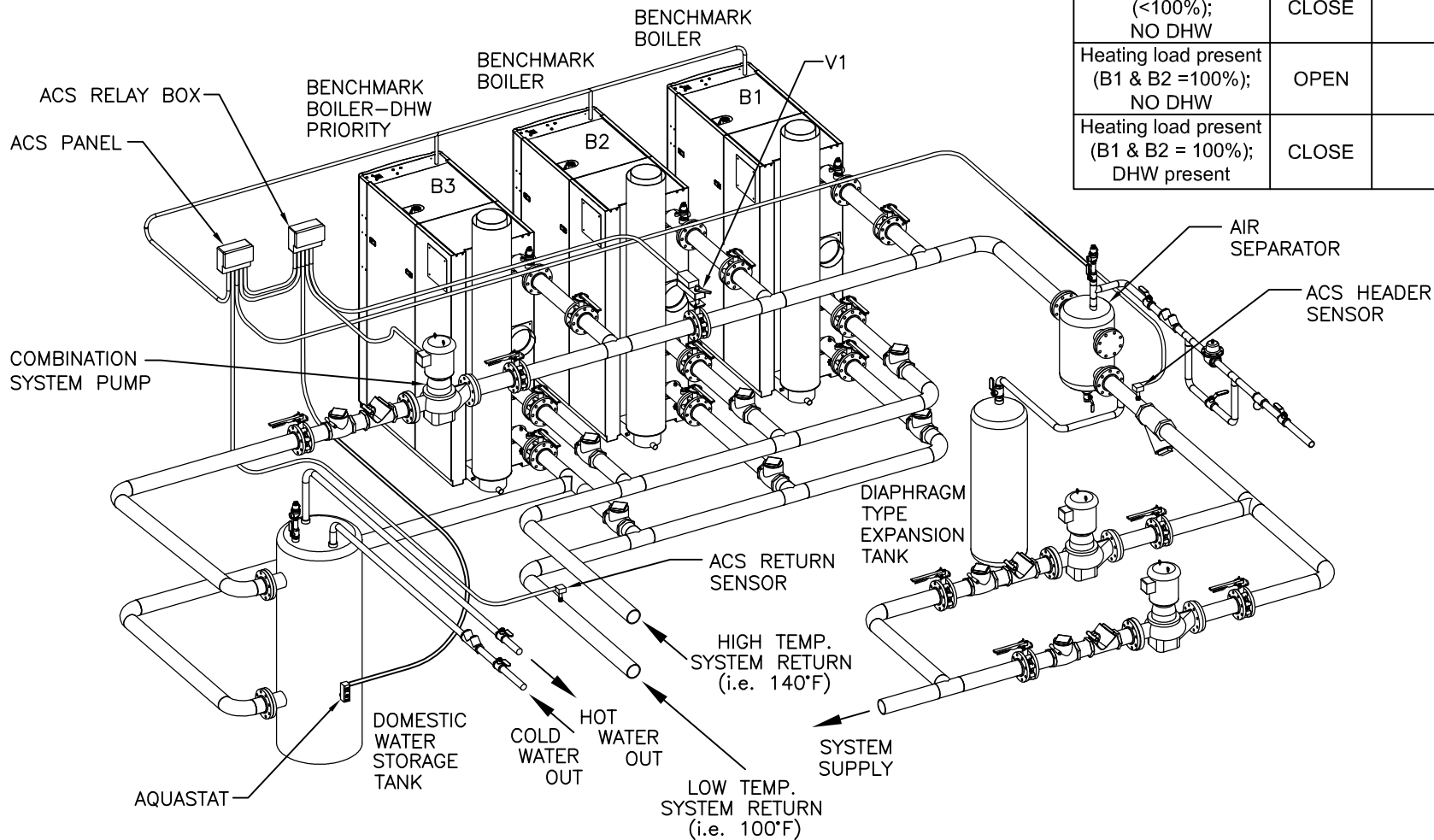



	V1	COMBINATION SYSTEM PUMP	B3 - DHW PRIORITY
Heating + DHW loads present	CLOSE	ON	CONSTANT SETPOINT
Heating load present (<100%); NO DHW	CLOSE	OFF	STANDBY
Heating load present (B1 & B2 =100%); NO DHW	OPEN	OFF	HEATING MODE
Heating load present (B1 & B2 = 100%); DHW present	CLOSE	ON	CONSTANT SETPOINT



NOTES:

- SEE COMBINATION HEATING/DOMESTIC WATER HEATING APPLICATIONS GUIDE TAG-0050 AND WIRING DIAGRAM SD-A-885 FOR COMPLETE APPLICATION AND CONTROLS DETAILS.
- THE ABOVE DIAGRAM DEPICTS THE COMBINATION HEATING/DOMESTIC WATER PIPING ONLY. FOR GAS PIPING AND THE REST OF THE WATER-SIDE PIPING DETAILS, SEE APPROPRIATE BENCHMARK BOILER PIPING SCHEMATIC.
- FOR ACTUAL SIZES AND LOCATIONS OF PIPING AND OTHER CONNECTIONS TO THE BOILER, SEE APPROPRIATE BENCHMARK BOILER DIMENSIONAL DRAWING.
- THIS IS A TYPICAL INSTALLATION DRAWING. LOCAL CODES AND AUTHORITIES SHOULD BE CONSULTED.
- BOILER PUMP MUST BE SIZED TO PROVIDE THE APPROPRIATE FLOW AT THE DESIGN  $\Delta T$  OF BOILER PLANT.  
BOILER PUMP MUST MAINTAIN BENCHMARK BOILER(S) REQUIRED MINIMUM FLOW:  
BMK 750-1000 - 12 GPM MINIMUM FLOW  
BMK 1500-3000- 25 GPM MINIMUM FLOW  
BMK 5000-6000- 75 GPM MINIMUM FLOW
- USE OF BALANCING VALVES IS RECOMMENDED IF THE PIPING ARRANGEMENT IS NOT REVERSE RETURN.

 A WATTS Brand	100 ORITANI DRIVE BLAUVELT, NY 10913 aerco.com	
	BENCHMARK® PLATINUM BOILER - COMBINATION HEATING/DOMESTIC HOT WATER PIPING - DESIGNATED DHW BOILER APPLICATIONS WITH ACS RELAY BOX	
DWN. BY <u>K.S.</u> DATE <u>092116</u>	SD-A-1124	REV. B
SCALE <u>NTS</u>		
APPD. _____ DATE _____		