

## Technical Data Sheet

# Lead Free Constant Speed Pump Kits

These lead-free pumps are specifically selected for potable water applications. They are ideal for AM Series water heater installations. These kits include a circuit setter which allows for setting flow rates that meet the minimum and do not exceed the maximum allowed through the water heater. The pumps come with lead-free bronze volute. Pump Kit 99227-5 incorporates back-pull-out design which allows service without disturbing the piping.

### Features

- In-line, wet rotor pump design
- Bronze, lead-free body
- Permanently lubricated/grease lubricated motors
- Max. working pressure: 145 psi
- Max. operating temperature: 230°F



Actual pump may vary from illustration

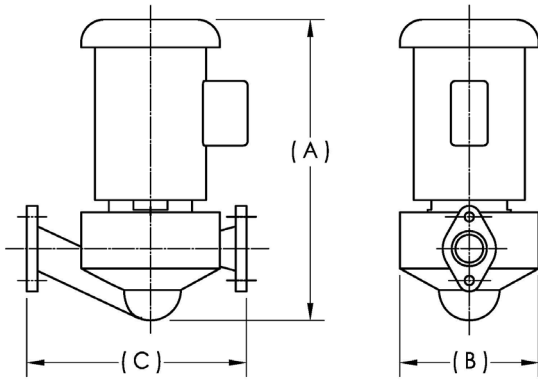
### Selection Tables

	Max Hardness =10 gpg Max Total Dissolved Solids=200 ppm			Max Hardness =18 gpg Max Total Dissolved Solids=200 ppm		
	Flow (GPM)	$\Delta P$ (Ft/Hd)	Pump Kit	Flow (GPM)	$\Delta P$ (Ft/Hd)	Pump Kit
AM 399	20	12	99237-1	37	34	99237-5
AM 500	20	12	99237-1	37	34	99237-5
AM 750	34	18	99237-2	60	50	99227-5
AM 1000	40	12	99237-2	75	41	99227-5

See Primary loop design guides C400.4 [AM Portable Applications] for details.

## Dimensions

	Electrical Requirement	FLA	hp	Flange Size	A	B	C
99237-1	115V/1PH/60Hz	2.15A	1/6	1-1/4" NPT	6-3/8"	4-1/8"	6-1/2"
99237-2	115V/1PH/60Hz	3.5A	1/2	1-1/2" NPT	6-11/16"	4-3/4"	8-1/2"
99237-5	115V/1PH/60Hz	4.15A	5/8	1-1/2" NPT	14-3/4"	8-3/4"	8-1/2"
99227-5	115V/208-30V/1PH/60Hz	20A (115V)/10A (230V)	1-1/2	2" NPT	18-1/4"	8"	11-1/2"



Actual pump may vary from illustration. Pump supplied may be from B&G or Grundfos.



Heat | Hot Water | Energy Recovery Solutions

AERCO International, Inc. • 100 Oritani Drive • Blauvelt, NY 10913  
 USA: T: (845) 580-8000 • Toll Free: (800) 526-0288 • AERCO.com